



# FEEL COMFORTABLE WITH THE POWER OF ClO2

## YOU CAN CATCH SOME DISEASES SIMPLY BY BREATHING

These are called airborne diseases which can spread when an infected person:



Cough



Talk



Sneeze

When you breathe airborne pathogenic organisms in, they take up residence inside you. They will enter your body and attack our immune system, and that is when we become sick. **Therefore the priority of staying health is to minimize the chance of getting infected by germs.**

### WHAT IS

## E.A MASK?

### Solid Chlorine Dioxide: The Virus and Germ Buster

**Technology from Japan** has developed a breakthrough product that addresses technical barriers that baffled the world's chlorine dioxide experts for hundreds of years.

Pioneering the development of chlorine dioxide (ClO2) into a daily lifestyle product for health protection to eliminate all forms of microbial life such as viruses, bacteria, fungi and spores.

*Chlorine dioxide gas (ClO2), is a worldwide potent molecule approved by FDA, EPA, WHO, FAO and other international Association around the world. Air Mask generating ClO2 gas with concentration of only 0.017 ppm. This concentration is far below the 0.1 ppm international threshold limit.*



Side



Front

### HOW DOES

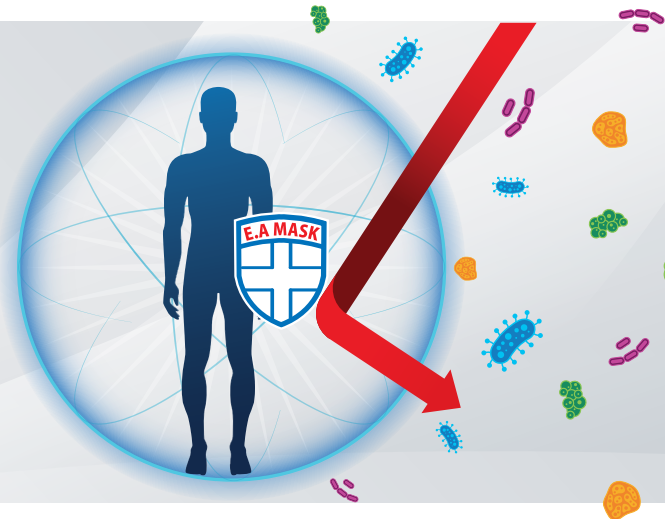
## E.A MASK WORK?

The solid chlorine dioxide in this product has overcome the traditional method of spraying at a single target.

### WHEN EA MASK IS IN CONTACT WITH AIR IT WILL RELEASE CHLORINE DIOXIDE.

As the molecule of chlorine dioxide are heavier than air, the molecules will not drift away quickly but will flow around the body and even attach to your clothes

## CREATING AN ATMOSPHERIC SHIELD FOR PROTECTION AGAINST GERMS, VIRUSES, BACTERIA, POLLEN & ODORS



### MECHANISM OF ACTION

When viruses, germs and fungi come into contact with the clothes of someone who is wearing the EA Mask, they will be oxidized and lose the ability to duplicate themselves.

**VIRUS:** ClO2 coming out from EA Mask can swiftly destroy the tyrosine of the virus, this reaction will suppress the ability of the virus to infect the human body.

**GERMS:** ClO2 also kill germs and other microorganisms as it can control them from synthesizing protein. ClO2 then reacts with the amino acid of the germ which results in the germ cell being destroyed.

**FORMALDEHYDE:** ClO2 coming from the EA Mask reacts with formaldehyde and forms into formic acid. The Formic acid will then react with the ClO2 to become Carbon Dioxide monomer. Therefore, EA mask removes the smells from moulds and toxic gas like the smoke from cigarettes.

**POLLEN:** ClO2 coming out from the EA Mask can also react with pollen particles or similar antigen proteins turning them into harmless proteins.

**FUNGI:** ClO2 penetrates the cell and oxidizes the central mercapto group therefore killing bacillus, viruses, algae and fungi.

**EA MASK CAN EFFECTIVELY PREVENT THE PERSON WHO WEARS IT FROM INFLECTING INFLUENZA**

OR IT CAN RELIEVE IRRITATION FOR PEOPLE SUFFERING FROM HAY FEVER AND ALLERGIC RHINITIS.



# INDIVIDUAL PROTECTION AGAINST

**VIRUSES** H1N1 virus | ARVI | Rhinovirus | Parainfluenza virus | Adenovirus, etc

**INFECTIOUS DISEASES** Rotavirus infection | Staphylococcus | Meningitis, etc

**PNEUMONIA & OTHERS**

EA MASK MAKES LIFE EASIER  
**FOR PEOPLE WITH ASTHMA**  
*thereby ensuring the safety of your health  
 and the atmosphere around you*

## WHO CAN USE E.A MASK?



Immuno compromised patients with auto immune disease



Patient undergoing chemotherapy



Immunosuppression



Children and the elderly, proving full protection against airborne infections



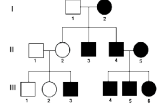
Pregnant women preventing airborne infection



Allergen, eliminating fungi and pollen allergen



Nosocomial infection, reducing risks of hospitals infections



Inherited diseases that affect the immune system

## WHAT IS ClO2 MAIN STRENGTH?

TRADITIONAL STERILIZER

GET INSIDE THE PATHOGENS TO KILL THEM

LONGER TIME TO KILL

CHANCE TO BUILD RESISTANCE

ClO2

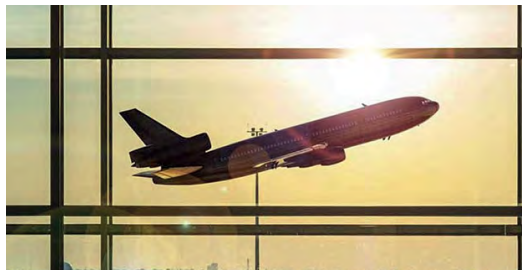
PHYSICALLY ATTACK PATHOGENS THROUGH OXIDATION OF THE OUTER LAYER

30 TO 60 SECONDS TO KILL

TO DATE NO ORGANISM HAS SHOWN RESISTANCE AGAINST ClO2

## E.A MASK can effectively prevent virus and bacteria from spreading in PUBLIC TRANSPORTATIONS, SCHOOLS & HOSPITALS.

*E.A MASK prevents the person wearing it from spreading viruses, germs and fungi through their clothes.*



FEEL COMFORTABLE WITH THE POWER OF ClO2



T 00961 (0) 5555105  
 M 00961 71 181446  
 E info@mems-lb.com  
 www.mems-lb.com